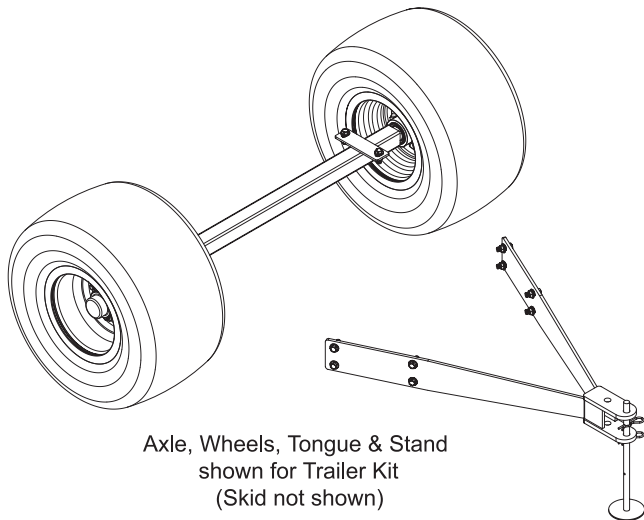


5301444
Model: FSTK-60
TRAILER KIT FOR 60 GALLON SKID SPRAYER



Axle, Wheels, Tongue & Stand
shown for Trailer Kit
(Skid not shown)

ASSEMBLY INSTRUCTIONS

1. Attach the axle member to the bottom of the skid. Use the (4) 3/8" x 1" hex lock screws and hex whiz lock nuts to bolt the axle into place.
2. Secure the wheels to the axle hubs.
3. Bolt the tongue to the pump end of the skid using (4) 3/8" x 1" hex lock screws and hex whiz lock nuts.

GENERAL INFORMATION

The purpose of this manual is to assist you in operating your sprayer. Please read it carefully as it furnishes information which will help you operate and maintain your sprayer.

WARRANTY / PARTS / SERVICE

Your authorized dealer is the best source of replacement parts and service. To obtain prompt, efficient service, always remember to give the following information.

1. Correct part description and part number.
2. Model number of your sprayer.
3. Serial number of your sprayer.

Part number and descriptions can be obtained from the illustrated parts list section of this manual. Whenever you need parts or repair service, contact your distributor / dealer first. For warranty work, always take your original sales slip, or other evidence of purchase date, to your distributor / dealer.

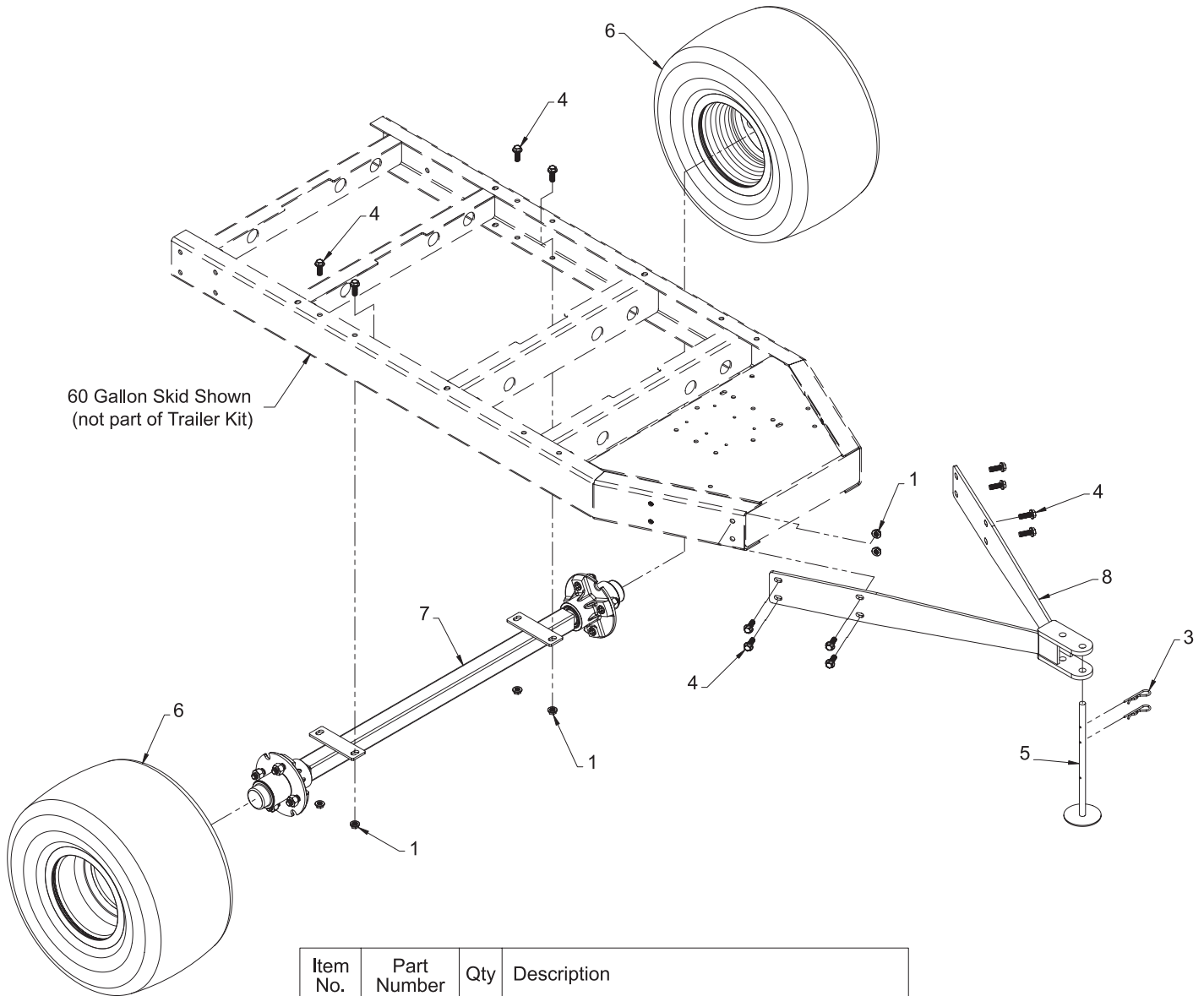
SCHABEN
I N D U S T R I E S

5834 East 23RD ST
Columbus NE 68601
402-564-4544

239 S Meridian
Newton KS 67114
316-283-4444

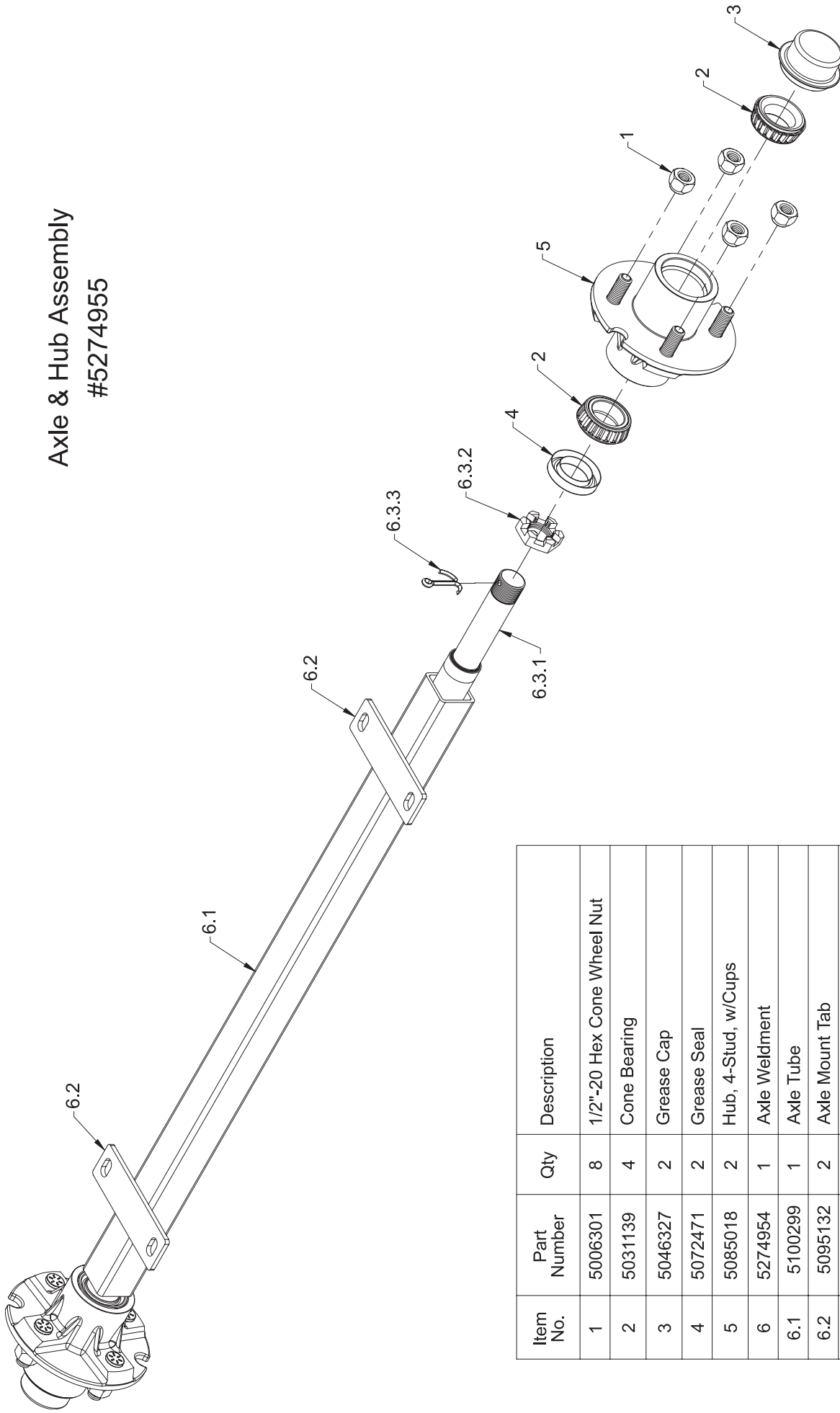
4450 State RD
Bakersfield CA 93308
877-724-2236

FSTK-60 Trailer Kit
 (for 60 Gallon Skids)
 (5301444)



Item No.	Part Number	Qty	Description
1	5006259	12	3/8"-16 Hex Whiz (Flange) Locknut
2	5006307	1	5/16"-18 Hex Whiz (Flange) Locknut
3	5101065	2	#211 Hitch Pin Clip, (Hair-Pin Cotter 0.120")
4	5117307	12	3/8"-16 x 1" Whiz (Flange) Lockscrew
5	5272092	1	Stand Weldment
6	5272464	2	Wheel, 18 x 9.5 x 8 - 4-Bolt
7	5274955	1	Axle & Hub Assembly
8	5274957	1	Trailer Kit Tongue Weldment (SK-61)

Axle & Hub Assembly #5274955



Item No.	Part Number	Qty	Description
1	5006301	8	1/2"-20 Hex Cone Wheel Nut
2	5031139	4	Cone Bearing
3	5046327	2	Grease Cap
4	5072471	2	Grease Seal
5	5085018	2	Hub, 4-Stud, w/Cups
6	5274954	1	Axle Weldment
6.1	5100299	1	Axle Tube
6.2	5095132	2	Axle Mount Tab
6.3	5272466	2	Spindle Assembly
6.3.1	5024110	1	Spindle
6.3.2	5006300	1	Castle Nut, 1"
6.3.3	5101081	1	Cotter Pin, 5/32" x 2"