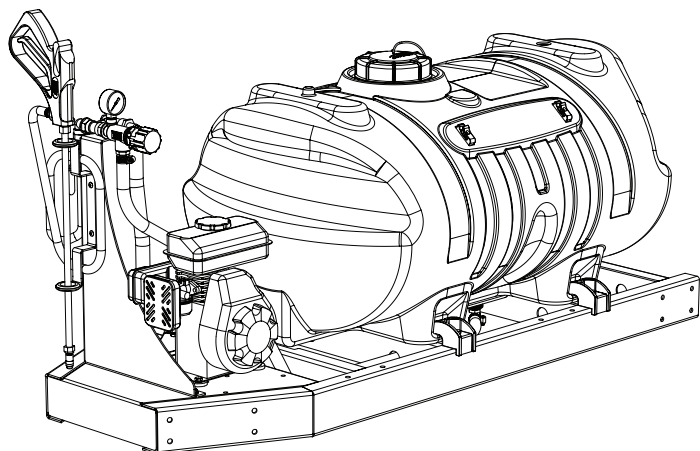


5301446
Model FSSS-60-2.5
60 Gallon Skid Sprayer

ASSEMBLY / OPERATION INSTRUCTIONS / PARTS



1. Correct part description and part number.
2. Model number of your sprayer.
3. Serial number of your sprayer.

Part number and descriptions can be obtained from the illustrated parts list section of this manual. Whenever you need parts or repair service, contact your distributor / dealer first. For warranty work, always take your original sales slip, or other evidence of purchase date, to your distributor / dealer.

TECHNICAL SPECIFICATIONS

- 2.5 H.P. Recoil Start Engine
- 4 Roller Pump - 6 G.P.M.
- Pressure Relief Valve
- Pressure Gauge - Glycerin Filled
- Suction Line Filter
- 25 Ft. Hand Gun Hose
- Pistol Grip Spray Gun

ASSEMBLY INSTRUCTIONS

The sprayer is assembled except for the valve mount and pressure gauge. Attach the valve mount as shown on the exploded view drawing.

TESTING THE SPRAYER

NOTE: Add proper oil to the engine crankcase and gasoline to the gas tank. Refer to the engine manual for the correct type and amount.

It is important to test the sprayer with plain water before actual spraying is attempted. This will enable you to check the sprayer for leaks in the plumbing system.

1. Open tank lid and be sure the tank is clean and free of foreign material. Fill the tank about half full with plain water.
2. Open the poly valve in the suction line and allow water to flow to the pump. The valve is located at this point to enable the strainer to be taken apart for cleaning.

CAUTION: Always be sure that water has reached the roller pump before starting your sprayer. If the pump is run dry, serious damage to the pump will result.

BEFORE RETURNING THIS PRODUCT
FOR ANY REASON, PLEASE CALL

1-800-274-1025

IF YOU SHOULD HAVE A QUESTION OR
EXPERIENCE A PROBLEM WITH YOUR
SCHABEN INDUSTRIES PRODUCT:

1-800-274-1025

BEFORE YOU CALL, PLEASE HAVE THE
FOLLOWING INFORMATION AVAILABLE:
SALES RECEIPT & MODEL NUMBER. IN MOST
CASES, A SCHABEN INDUSTRIES EMPLOYEE CAN
RESOLVE THE PROBLEM OVER THE PHONE.

GENERAL INFORMATION

The purpose of this manual is to assist you in operating your sprayer. Please read it carefully as it furnishes information which will help you operate and maintain your sprayer.

STOP

WARNING

STOP

DO NOT USE PUMP IN AN EXPLOSIVE
ENVIRONMENT. DO NOT USE TO PUMP
FLAMMABLE FLUIDS, GASOLINE,
KEROSENE, FUEL OIL, ETC.

WARRANTY / PARTS / SERVICE

Your authorized dealer is the best source of replacement parts and service. To obtain prompt, efficient service, always remember to give the following information.

SCHABEN
INDUSTRIES

WWW.SCHABENINDUSTRIES.COM

5834 East 23RD ST	239 S Meridian	4450 State RD
Columbus NE 68601	Newton KS 67114	Bakersfield CA 93308
402-564-4544	316-283-4444	877-724-2236

Form No. 975 (5004653 3/07)

Printed In U.S.A.

3. It is always best to start the sprayer at little or no pressure. This sprayer is equipped with a spring loaded relief valve. Turn the valve knob out to decrease pressure and in for increased pressure.
4. Open the handgun control valve which is located on the valve mount.
5. You may now start the sprayer engine following the engine manufacturers instructions. Let the sprayer run at low pressure until water sprays from the handgun and all air has been purged from the boom lines.

CAUTION: Care must be taken, being sure the handgun is secured in the operators hand. If this is not done a recoiling action may occur causing damage or personal injury.

6. The pressure should now be increased to 30-100 P.S.I. Operate the sprayer at this increased pressure for 3-5 minutes, thoroughly testing the unit before adding chemicals.

CAUTION

PRESSURE SWITCH OPERATION

Pressure switch is pre-set at the factory. Improper adjustment of the pressure switch, may cause severe overload or premature failure. If the pump is subjected to rapid cycling during normal operation, or infrequent periods, damage may occur.

AFTER SPRAYING

WARNING: Some chemicals will damage the pumps valves if allowed to soak untreated for a length of time. Always flush the pump with water after use. Do not allow chemicals to sit in pump for extended times of idleness.

After use fill the sprayer part way with water, start the sprayer and allow clear water to be pumped through the plumbing system and out through handgun. Use the handgun to thoroughly wash all internal parts of tank and tank cover.

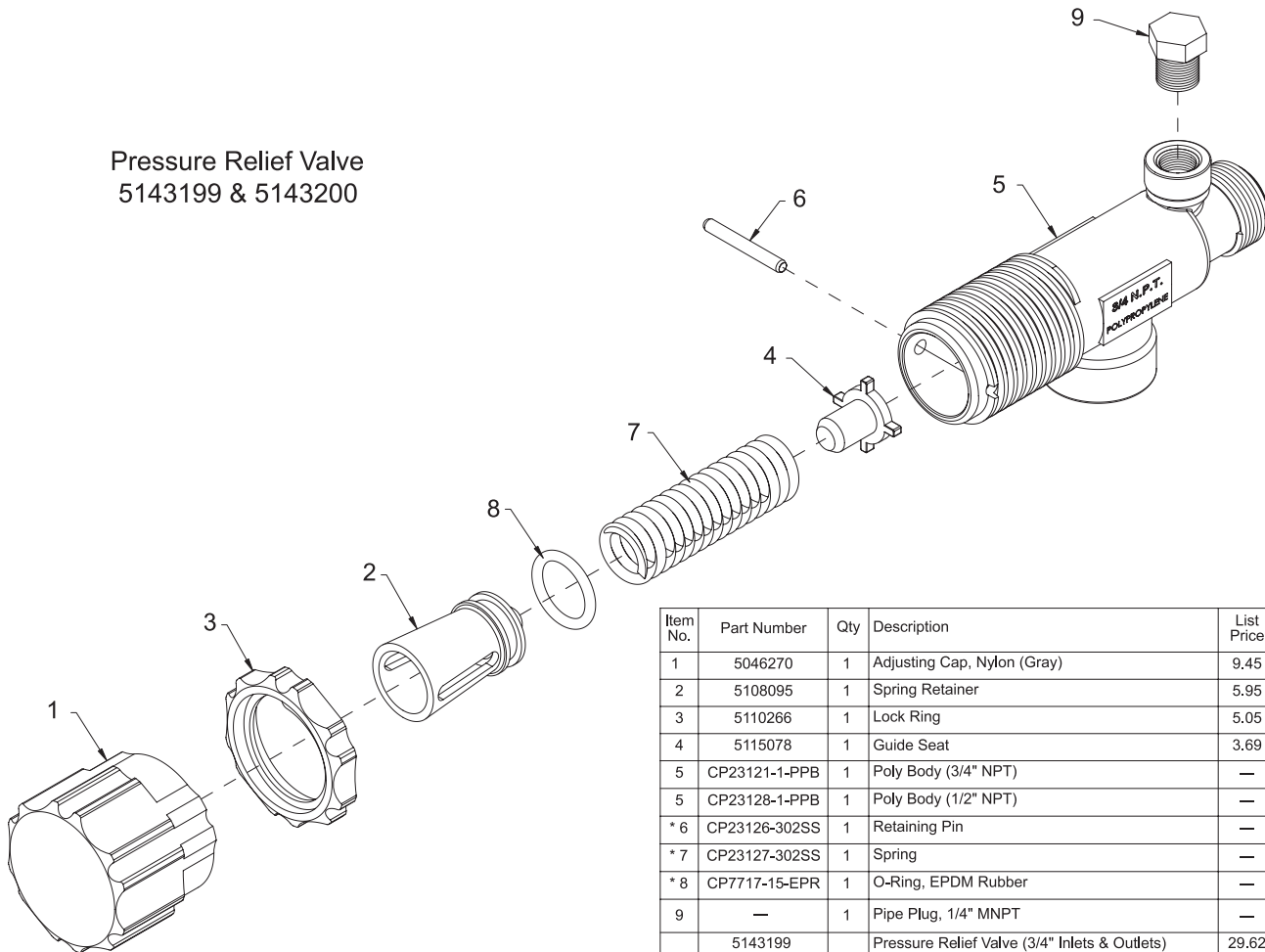
Refill the tank about half full with plain water and use a chemical neutralizer such as NUTRA-SOL or equivalent and repeat cleaning instructions above. Flush the entire sprayer with the neutralizing agent. Follow the chemical manufacturers disposal instructions of all wash and rinsing water.

WINTER STORAGE

Drain all water out of the sprayer paying special attention to pump, valves, and spray gun. These items are especially prone to damage from chemicals and freezing weather.

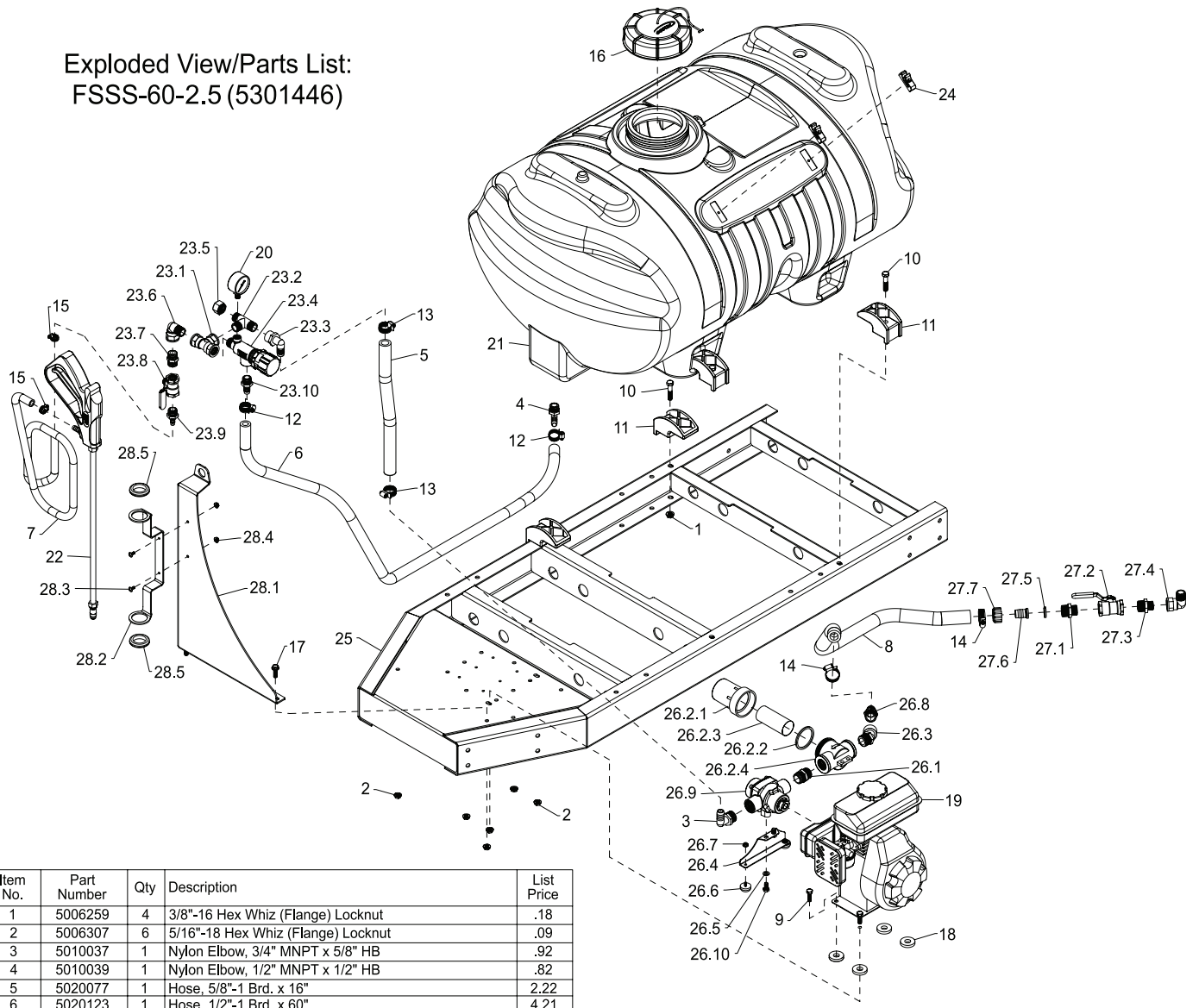
The sprayer should be winterized before storage by pumping a 50-50 solution of water and anti-freeze through the entire plumbing. Proper care and maintenance will prolong the life of the sprayer.

Pressure Relief Valve
5143199 & 5143200



Item No.	Part Number	Qty	Description	List Price
1	5046270	1	Adjusting Cap, Nylon (Gray)	9.45
2	5108095	1	Spring Retainer	5.95
3	5110266	1	Lock Ring	5.05
4	5115078	1	Guide Seat	3.69
5	CP23121-1-PPB	1	Poly Body (3/4" NPT)	—
5	CP23128-1-PPB	1	Poly Body (1/2" NPT)	—
* 6	CP23126-302SS	1	Retaining Pin	—
* 7	CP23127-302SS	1	Spring	—
* 8	CP7717-15-EPR	1	O-Ring, EPDM Rubber	—
9	—	1	Pipe Plug, 1/4" MNPT	—
	5143199		Pressure Relief Valve (3/4" Inlets & Outlets)	29.62
	5143200		Pressure Relief Valve (1/2" Inlets & Outlets)	29.62
	5168717		Spare Parts Kit (Included all items marked with *)	14.59

Exploded View/Parts List:
FSSS-60-2.5 (5301446)



Item No.	Part Number	Qty	Description	List Price
1	5006259	4	3/8"-16 Hex Whiz (Flange) Locknut	.18
2	5006307	6	5/16"-18 Hex Whiz (Flange) Locknut	.09
3	5010037	1	Nylon Elbow, 3/4" MNPT x 5/8" HB	.92
4	5010039	1	Nylon Elbow, 1/2" MNPT x 1/2" HB	.82
5	5020077	1	Hose, 5/8"-1 Brd. x 16"	2.22
6	5020123	1	Hose, 1/2"-1 Brd. x 60"	4.21
7	5020135	1	Hose, 3/8"-1 Brd. x 25 Ft.	14.50
8	5020378	1	Hose, 3/4"-2 Brd. x 21"	3.20
9	5034042	4	H.H.C.S., 5/16"-18 x 1"	.25
10	5034101	4	H.H.C.S., 3/8"-16 x 1 3/4"	.50
11	5038698	4	Plastic Tank Hold-Down Leg Clip	2.93
12	5051022	2	Hose Clamp, 1/2"	.62
13	5051022	2	Hose Clamp, 1/2"	.62
14	5051024	2	Hose Clamp, 3/4"	.67
15	5051114	2	Hose Clamp, 3/8"	.63
16	5058183	1	FIMCO 5" Threaded Tank Lid w/Lanyard	10.50
17	5117300	2	5/16"-18 x 1" Flange Whiz Lock Screw	.22
18	5127188	4	Handle Spacer	.79
19	5152104	1	2.5 HP Engine	
20	5167004	1	Gauge, 0-200# (Dry)	5.99
21	5169250	1	60 Gallon Elliptical Tank (Yellow)	
22	5273959	1	Handgun w/X-26 Tip	36.00
23	5274707	1	Valve Assembly	40.77
23.1	5010113	1	Nylon "Tee" Fitting, 1/2" FNPT	3.09
23.2	5010258	1	Poly Tee Fitting, 1/2" MNPT	5.47
23.3	5149085	1	Nylon Hose Fitting, 1/2" FNPT x 5/8" HB	1.80
23.4	5143200	1	Pressure Relief Valve (1/2" NPT)	29.62
23.5	5046392	1	Nylon Hex Cap, 1/2" FNPT	.56
23.6	5010148	1	Nylon Street Elbow, 1/2" MNPT x 1/2" FNPT	2.16
23.7	5011054	1	Nylon Close Nipple, 1/2" MNPT	.41
23.8	5143197	1	1/2" T-800 Brass Ball Valve	8.99
23.9	5067016	1	Nylon Fitting, 1/2" MNPT x 3/8" HB	.49
23.10	5067017	1	Nylon Fitting, 1/2" MNPT x 1/2" HB	.48
24	5274880	1	Pkg. (2) Handgun Clips & (2) Screws	2.85
25	5274884	1	Skid Frame Weldment (SK-61)	201.64
26	5274885	1	Pump Sub-Assembly	176.29
26.1	5011055	1	Nylon Close Nipple, 3/4" MNPT	.56

Item No.	Part Number	Qty	Description	List Price
26.2	5116322	1	3/4" Black Poly Strainer	10.75
26.2.1	5058125	1	Strainer Bowl	9.60
26.2.2	5072229	1	EPDM Gasket	2.10
26.2.3	5116323	1	40 Mesh Screen	4.00
26.2.4	5046088	1	Strainer Cap	10.00
26.3	5010192	1	45 Degree Nylon Street Elbow, 3/4" NPT	1.60
26.4	5038636	1	Torque Bracket	3.95
26.5	5016026	2	Lockwasher, 5/16"	.25
26.6	5040004	2	Rubber-Headed Machine Screw Bumper (#10-24)	1.75
26.7	5006186	2	#10-24 Hex Whiz (Flange) Locknut	.10
26.8	5010020	1	Nylon Fitting, 3/4" MNPT x 3/4" HB	.61
26.9	5275495	1	4-Roller Pump (Cast Iron)	149.00
26.10	5034154	2	H.H.C.S., 5/16"-18 x 5/8"	.25
27	5274939	1	Tank Valve Assembly	14.45
27.1	5005022	1	Nylon Male Street Adapter, 3/4" MGHT x 3/4" MNPT	.54
27.2	5143190	1	3/4" "T-800" Brass Ball Valve	9.99
27.3	5011129	1	Nylon Reducing Nipple, 3/4" MNPT x 1/2" MNPT	.50
27.4	5010148	1	Nylon Street Elbow, 1/2" MNPT x 1/2" FNPT	2.16
27.5	5016066	1	#102 Hose Washer (Gasket) 1" O.D. Rubber	.20
27.6	5149013	1	Nylon Swivel, 3/4" Flat Seat Hose Barb	.37
27.7	5006055	1	Nylon Swivel Nut, 3/4" FGHT	.38
28	5275405	1	Valve Mount Sub-Assembly	31.23
28.1	5038704	1	Valve Mount Bracket	11.61
28.2	5038638	1	Handgun Holder Bracket	9.32
28.3	5117234	2	#10-24 x 1/2" Phillips Truss Head Machine Screw	.25
28.4	5006186	2	#10-24 Hex Whiz (Flange) Locknut	.10
28.5	5075014	2	Rubber Grommet (Black)	2.79