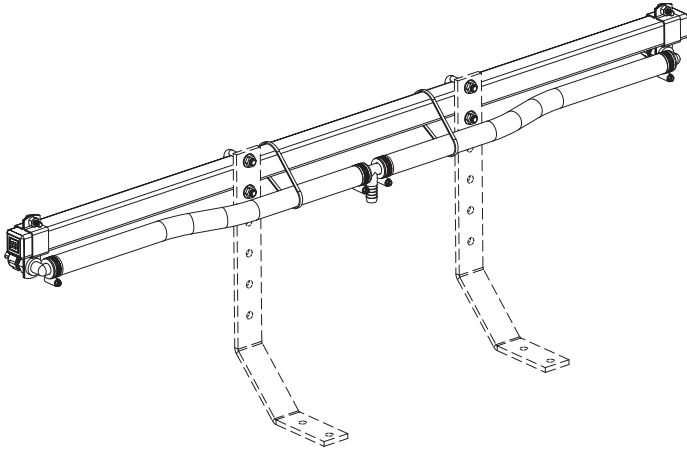


5300975

MODEL NO. FSBK-2

2 NOZZLE BOOM ASSEMBLY

Assembly / Operation Instructions / Parts



**BEFORE RETURNING THIS PRODUCT
FOR ANY REASON, PLEASE CALL**

1-800-274-1025

**IF YOU SHOULD HAVE A QUESTION OR
EXPERIENCE A PROBLEM WITH YOUR
SCHABEN INDUSTRIES PRODUCT:**

1-800-274-1025

**BEFORE YOU CALL, PLEASE HAVE THE
FOLLOWING INFORMATION AVAILABLE:
SALES RECEIPT & MODEL NUMBER. IN MOST
CASES, A SCHABEN INDUSTRIES EMPLOYEE CAN
RESOLVE THE PROBLEM OVER THE PHONE.**

Whenever you need parts or repair service, contact your distributor / dealer first. For warranty work always take your original sales slip, or other evidence of purchase date, to your distributor / dealer.

TECHNICAL SPECIFICATIONS

- Boom - 2 Nozzles - 80" Coverage
- Quality Nozzle Tips

ASSEMBLY INSTRUCTIONS

The boom is partially assembled. Look over the illustrated parts list section of this manual carefully before starting the assembly procedure.

1. Mount the boom tube to the sprayer. Before securing the "U" bolts make sure that the boom tube is centered on the sprayer. Now tighten all of the "U" bolts securing the boom to brackets.
2. Attach the nozzle harness assembly to the boom tube. Connect the boom feed line hose to the hose barb at the center of the boom. See the exploded view drawing for details.

OPERATION

The pumping system draws solution from the tank, through the strainer, and to the pump. The pump forces the solution under pressure to the boom nozzles.

GENERAL INFORMATION

The purpose of this manual is to assist you in operating and maintaining your lawn and garden sprayer. Please read it carefully as it furnishes information which will help you achieve years of dependable trouble free operation.

WARRANTY / PARTS / SERVICE

Your authorized dealer is the best source of replacement parts and service. To obtain prompt, efficient service, always remember to give the following information:

1. Correct part description and part number.
2. Model Number of your boom.

Part description and part numbers can be obtained from the illustrated parts list section of this manual.

USING THE BOOM NOZZLES

- Four things must be considered before spraying with the boom.
 1. How much chemical must be mixed in the tank.
 2. Rate of spray (gallons per acre to be sprayed).
 3. What pressure (P.S.I.) will be used.
 4. Speed traveled (M.P.H.) while spraying.

SCHABEN
INDUSTRIES

WWW.SCHABENINDUSTRIES.COM

5834 East 23RD ST 239 S Meridian 4450 State RD
Columbus NE 68601 Newton KS 67114 Bakersfield CA 93308
402-564-4544 316-283-4444 877-724-2236

Form No. 561

(5004475 12/08)

Printed In U.S.A.

- Refer to the chemical label to determine the chemical mixture.
- See the tip chart to determine the pressure to be used. The chart will also show the speed used when spraying.
- Since the towing vehicle does not have a speedometer, speed can be determined as per the directions.
- Check the spray pattern. Usually you can see the coverage better on solid concrete surface, such as a driveway.
- Raise or lower the nozzles so that you will have a good coverage pattern. If you can see dry spots on the concrete surface you will need to raise the nozzles. Too much solution in the pattern areas mean you need to lower the nozzles. Generally the proper height will be from 13 inches to 18 inches from the object being sprayed. Spray pattern overlap should be about 30 percent.

CALIBRATION

Chemical labels may show application rates in gallons per acre, gallons per 1000 square feet, or gallons per 100 square feet. You will note that the tip chart below shows all three of these rating systems.

TF-VP3 Tip Chart

Tip No.	Spray Height	Pressure (PSI)	Capacity (GPM)	GALLONS PER ACRE - BASED ON WATER						
				1 MPH	2 MPH	3 MPH	4 MPH	5 MPH	7.5 MPH	10 MPH
3	13"	10	.30	44	22	14.9	11.1	8.9	5.9	4.5
		20	.42	63	31.5	20.9	15.7	12.6	8.4	6.3
		30	.52	76	38	26	19.3	15.4	10.3	7.7
		40	.60	90	45	30	22	17.8	11.8	8.9
Tip No.	Spray Height	Pressure (PSI)	Capacity (GPM)	GALLONS PER 1000 SQ. FT. - BASED ON WATER						
				1 MPH	2 MPH	3 MPH	4 MPH	5 MPH	7.5 MPH	10 MPH
3	13"	10	.30	1.01	.50	.34	.254	.204	.135	1.03
		20	.42	1.4	.72	.48	.36	.29	.19	.14
		30	.52	1.74	.87	.596	.44	.35	.236	.176
		40	.60	2.06	1.00	.688	.50	.408	.27	.20
Tip No.	Spray Height	Pressure (PSI)	Capacity (GPM)	GALLONS PER 100 SQ. FT. - BASED ON WATER						
				1 MPH	2 MPH	3 MPH	4 MPH	5 MPH	7.5 MPH	10 MPH
3	13"	10	.30	.10	.050	.034	.025	.020	.013	.010
		20	.42	.14	.072	.048	.036	.029	.019	.014
		30	.52	.174	.087	.059	.044	.035	.0236	.017
		40	.60	.206	.1	.068	.050	.040	.027	.020

Once you know how much you are going to spray then determine (from the tip chart) the spraying pressure (PSI), and the spraying speed (MPH).

Conditions of weather and terrain must be considered when setting the sprayer. Do not spray on windy days. Protective clothing must be worn in some cases. **Be sure to read the chemical label carefully.**

Determining the proper speed of the tractor can be done by marking off 100, 200, and 300 feet. The speed chart indicates the number of seconds it takes to travel the distances. Set the throttle, and with a running start travel the distances. Adjust the throttle until you travel the distances in the number of seconds indicated by the speed chart. Once you have reached the throttle setting needed, mark the throttle location so you can stop and go again (returning to the same speed).

Speed Chart

Speed in M.P.H. (Miles Per Hour)	Time Required in Seconds to Travel a distance of;		
	100 ft.	200 ft.	300 ft.
1.0	68	136	205
2.0	34	68	102
3.0	23	45	68
4.0	17	34	51
5.0	14	27	41
6.0	11	23	34
7.0	9.7	19	29
8.0	8.5	17	26
9.0	7.6	15	23
10	6.8	14	20

Add water and proper amount of chemical to the tank and drive to the starting place for spraying. Adjust pressure with pressure adjusting valve to the pressure required. This must be determined from the nozzle tip chart and application rate recommended by the chemical manufacturer.

When you are ready to spray, turn the boom valve to the "on" position. This will start solution spraying from the tips. The pressure will decrease slightly when the boom is spraying.

AFTER SPRAYING

After use fill the sprayer part way with water, start the sprayer and allow clear water to be pumped through the plumbing system and out through the spray nozzles.

Refill the tank about half full with plain water and use a chemical neutralizer such as Nutra-Sol or equivalent and repeat cleaning instructions above. Flush the entire sprayer with the neutralizing agent. Follow the chemical manufacturers disposal instructions of all wash or rinsing water.

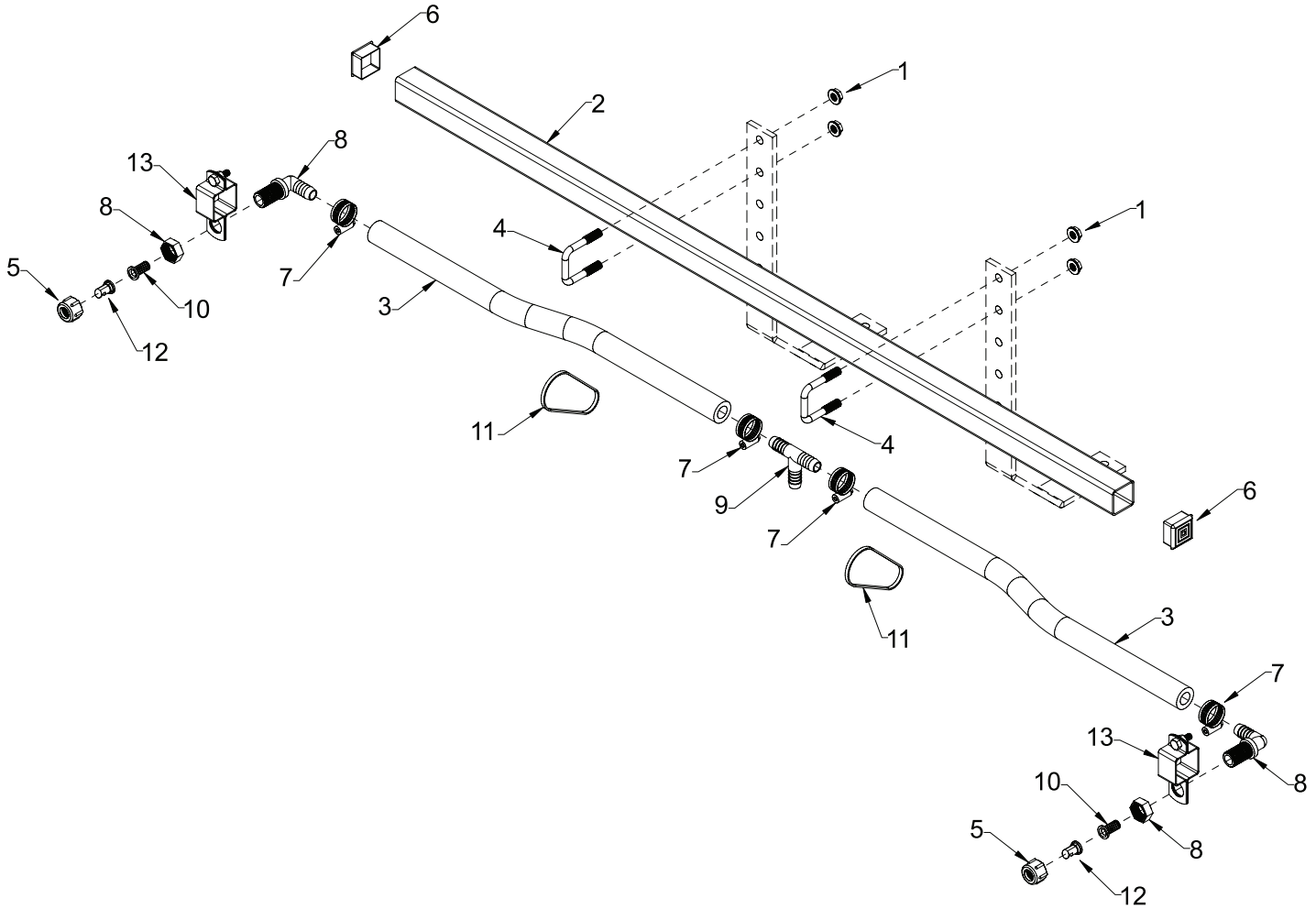
Remove tips and screens from the boom. Wash tips thoroughly with water or cleaning solution (appropriate for chemical used). Blow out orifice, clean and dry. If orifice remains clogged, clean it with a fine bristle (not wire) brush, or with a toothpick. Do not damage the orifice. Water rinse and dry tips before storing.

WINTER STORAGE

Drain all water out of sprayer paying special attention to pump valve & boom. These items are especially prone to damage from chemicals and freezing weather.

The sprayer should be winterized before storage by pumping a 50-50 solution of water and anti-freeze through the entire plumbing. Proper care and maintenance will prolong the life of the sprayer.

Repair Parts List for Model No. FSBK-2



ITEM NO.	PART NUMBER	QTY.	DESCRIPTION
1	5006307	4	5/16"-18 Hex Whiz (Flange) Locknut
2	5009321	1	Boom Tube
3	5020416	2	Hose, 1/2"-1 Brd. x 19 3/8"
4	5034159	2	Square U-Bolt, 5/16" x 1 5/16" (Inside) x 1 7/8" (Inside)
5	5046052	2	Nylon Nozzle Cap, 11/16" U.N.F. Thread
6	5046344	2	Square Cap, Black (1 1/4" Square Tube)
7	5051022	4	Hose Clamp, 1/2"
8	5056023	2	Nylon Elbow, 11/16" U.N.F. x 1/2" HB
9	5086003	1	Nylon Hose Tee, 1/2" HB
10	5116019	2	PolyPro 50 Mesh Nozzle Strainer, Red
11	5133094	2	Nylon Cable Tie (Black, 11"-5/32" x 30 lbs.)
12	5018327	2	Floodjet Tip, TKT-VP3
13	5273796	2	1 1/4" Square Boom Nozzle Clamp (BC114)